

# Solutions - Quiz 1

(January 22<sup>nd</sup> @ 5:30 pm)

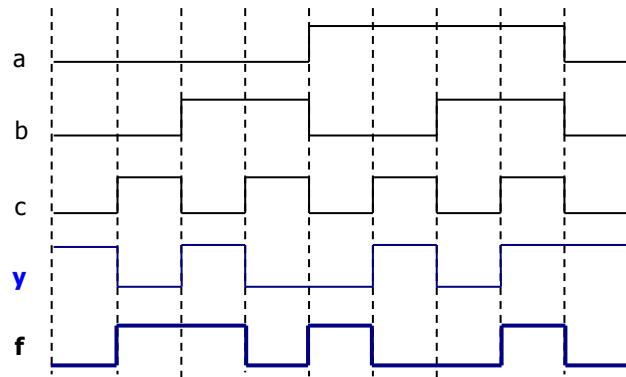
## PROBLEM 1 (30 PTS)

- Complete the timing diagram of the logic circuit whose VHDL description is shown below:

```
library ieee;
use ieee.std_logic_1164.all;

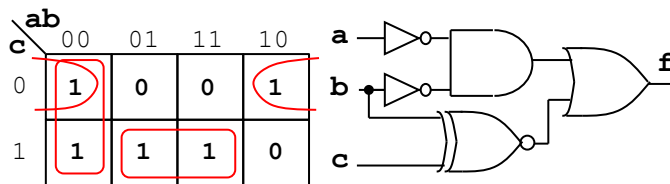
entity test is
  port ( a, b, c: in std_logic;
        f: out std_logic);
end test;

architecture struct of test is
  signal y: std_logic;
begin
  y <= a xnor c;
  f <= y xor (not b);
end struct;
```

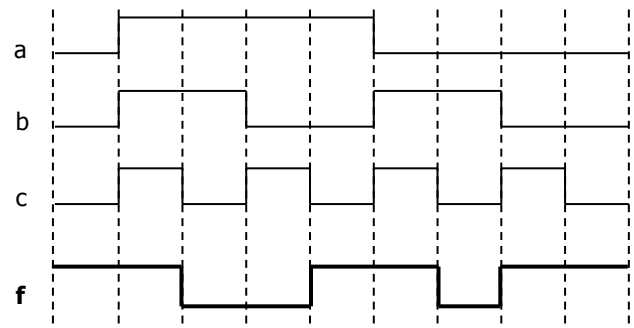


## PROBLEM 2 (40 PTS)

- The following is the timing diagram of a logic circuit with three inputs. Simplify the Boolean expression of the circuit and sketch the minimized circuit.



$$f = \bar{a}\bar{b} + bc + \bar{b}\bar{c}$$



## PROBLEM 3 (30 PTS)

- Complete the timing diagram of the digital circuit shown below. You must consider the propagation delays. Assume the propagation delay of every gate is 5 ns. The initial values of all signals are plotted in the figure.

